

London Philharmonic Orchestra

RESIDENT AT

**SOUTHBANK
CENTRE**



Prokofiev

Man of the people?

13 January —
1 February
2012

Get closer to
Sergei Prokofiev

Artistic Director:
Vladimir Jurowski



Friday 13 January 2012
7.30pm

Royal Festival Hall

Tickets £9–£39
Premium seats £65

Book now 020 7840 4242
lpo.org.uk

✳ Festival multi-buy
discounts available
See page 15

Free pre-concert event
6.00–6.45pm
Royal Festival Hall

'I don't know your crazy
instrument' Prokofiev
to Gregor Piatigorsky,
cellist, and dedicatee of
Prokofiev's Cello Concerto

Alexander Ivashkin
leads a discussion and
performance of Prokofiev's
works for the cello

Repertoire includes Adagio
Op. 97, his unfinished solo
cello Sonata Op. 133 –
Prokofiev's final work –
and his grandson Gabriel
Prokofiev's *Outta Pulser*
for nine cellos performed
by TrinityGold Cello
Ensemble directed
by Natalia Pavlutskaya

JTI Friday Series

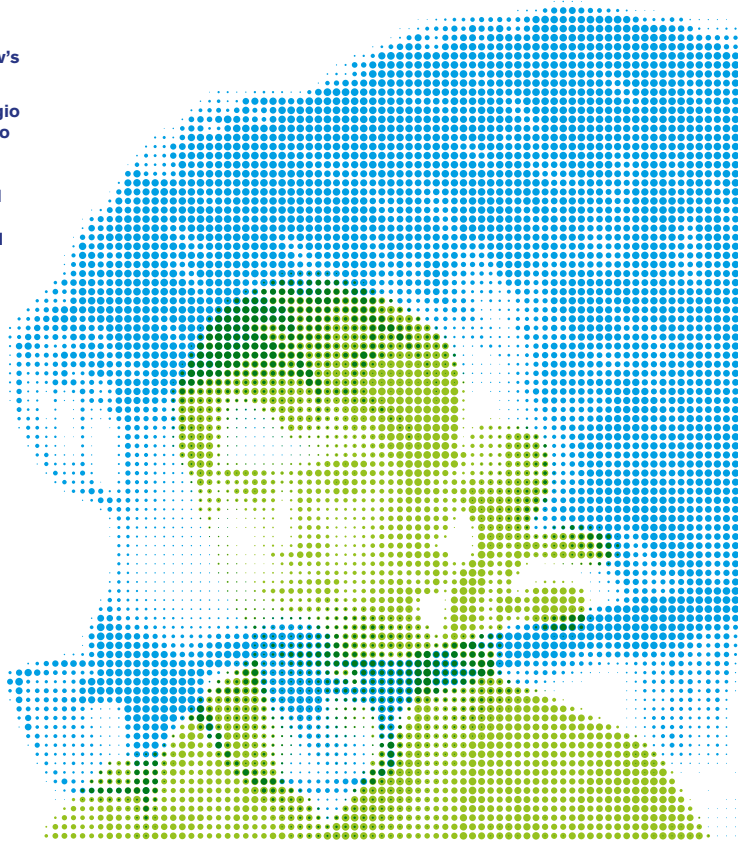


⬇ Exclusive free download
See page 15

Prokofiev Suite, Lieutenant Kijé
Prokofiev Cello Concerto, Op. 58
Prokofiev Symphony No. 7

Alexander Vedernikov conductor
Danjulo Ishizaka cello

'Kijé was a devilish job', said Prokofiev of his first attempt to write a film score, 'but what gay music!' How right he was. This artistically demanding screen satire needed a fine score and it got one – drawing from Prokofiev his most delightfully frivolous themes and smile-inducing orchestrations, the *Troika* famously propelled by a joyous combination of bells, piano, harp and percussion. Getting new and enchanting sounds from his orchestra was Prokofiev's priority in his Seventh Symphony, too. This sonic tapestry hands the listener a succession of enchantingly beautiful shapes and song-like themes that dance along with the utmost grace.



Wednesday 18 January 2012
7.30pm

—
Royal Festival Hall

Prokofiev Symphonic Song, Op. 57
Prokofiev Piano Concerto No. 5
Prokofiev Symphony No. 6

—
Vladimir Jurowski conductor
Steven Osborne piano

Tickets £9–£39
Premium seats £65

Book now 020 7840 4242
lpo.org.uk

✳ Festival multi-buy
discounts available
See page 15

—
Free pre-concert event
6.00–6.45pm
Royal Festival Hall

Prokofiev String Quartet No. 1
Prokofiev Quintet
Performed by musicians from
the Royal College of Music

Three pieces ripe for creative renewal are sure to receive it from Vladimir Jurowski. Prokofiev noted in his diary the ‘vigorous major themes’ that came to him as he sketched his Fifth Piano Concerto, a temperamental but brilliantly accomplished piece. The Concerto precedes the Sixth Symphony, arguably Prokofiev’s masterwork, written in 1947. ‘Now we are rejoicing in our great victory’, said the composer, ‘but each of us has wounds which cannot be healed, which must not be forgotten.’ Thus the Symphony became both commemorative and life-affirming – a sharp, ringing musical testament, laden with grief but plumbing a huge spectrum of emotional depths.

“I played the Fifth Concerto for the first time on 31 October 1932 with the Berlin Philharmonic Orchestra conducted by Furtwängler. I was late coming from another concert and reached Berlin in time for only the final rehearsal. ‘I left one rehearsal for you, but that is of course not enough for such a difficult score,’ Furtwängler said.”

—
Sergei Prokofiev

Saturday 21 January 2012
7.30pm

—
Amaryllis Fleming Concert Hall
Royal College of Music

Tickets £10–£20

Book now 020 7840 4242
lpo.org.uk

—
Royal College of Music
Box Office 020 7591 4314
rcm.ac.uk/boxoffice
(£1.95 booking fee)

—
Friday 20 January 2012 1.00pm
Level 2 Central Bar at
Royal Festival Hall

Prokofiev's Piano Music
Part of Southbank Centre's weekly
Friday Lunch series, an opportunity
to hear some of Prokofiev's music
up close and intimate
Admission free

Prokofiev (arr. Kabalevsky) Concertino for Cello
Prokofiev Two Poems, Op. 7
Prokofiev Ode to the End of the War
Prokofiev Symphony No. 2

—
Vladimir Jurowski conductor
Kristina Blaumane cello
Royal College of Music Symphony Orchestra
and Chorus

Following the dazzling success of their performance as part of the London Philharmonic Orchestra's Schnittke festival *Between Two Worlds* in 2009, Vladimir Jurowski returns to conduct the Royal College of Music Symphony Orchestra and Chorus in works that span Prokofiev's entire career.

“Anyone considering student orchestras as not capable of great performances would have needed to think again after this.”

—
Classical Source on Vladimir Jurowski and the Royal College of Music Symphony Orchestra

“31 January 1910: A little later I started rehearsals with the girls. They liked the piece and enjoyed singing it; I was transmogrified into ‘the composer’, ‘the maestro’, my stock in the Conservatoire rose rapidly, and I became a well-known figure within its walls, just as I had dreamed of before writing *The Swan*. I was ‘a composer’ who had written a ‘very beautiful’ chorus.”

—
Sergei Prokofiev on Two Poems

Sunday 22 January 2012
3.30pm

Royal Festival Hall

The Prokofiev Diaries

Vladimir Jurowski conductor
Simon Callow as Prokofiev
Piers Lane piano

Tickets £15

✳ Save £5 if you book with
tickets to an evening concert
See page 15

Book now 020 7840 4242
lpo.org.uk

Please note there will
be no interval

From student days at St Petersburg until 1933, just before he finally returned from the West to live out the remainder of his life in the Soviet Union, Prokofiev kept a uniquely revealing diary to which he confided his innermost thoughts, the struggles and triumphs of his creative life; his spiritual strivings; his relationships with lovers, friends, fellow musicians and other prominent artists; the events and encounters of his turbulent life at the centre of the most explosive period of 20th-century art. Anthony Phillips, who translated the diaries into English, has devised a programme in which readings from the diaries and other autobiographical writings, alongside musical extracts, will throw light on what lies behind some of the music created by this most complex, elusive and original genius.

Concert generously supported by Mr Leonid and Mrs Olga Makharinsky



10/11

Wednesday 25 January 2012
7.30pm

—
Royal Festival Hall

Prokofiev *Chout* (concert suite)
Prokofiev Piano Concerto No. 4 (for the left hand)
Prokofiev *Cinderella* (excerpts)

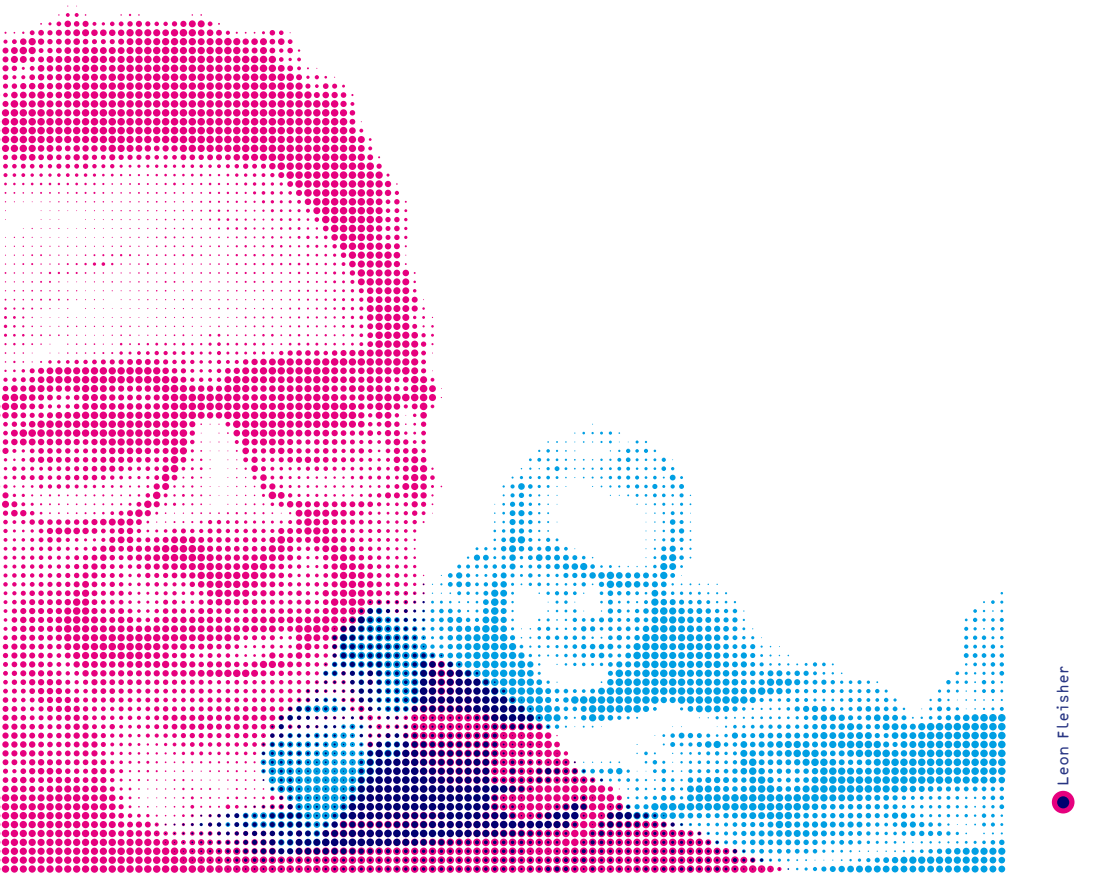
—
Vladimir Jurowski conductor
Leon Fleisher piano

Tickets £9–£39
Premium seats £65

Book now 020 7840 4242
lpo.org.uk

⊗ Festival multi-buy
discounts available
See page 15

‘What I wished to express above all in the music of *Cinderella*’, said Prokofiev, ‘was the poetic love of Cinderella and the Prince – the birth and flowering of that love, the obstacles in its path and finally the dream fulfilled.’ Prokofiev’s score captures precisely that: here is music above which a sprinkling of fairy dust seems to hover, so glistening are its orchestrations, so enchanting its textures. The composer’s music for the ballet *Chout* (or *The Buffoon*) was altogether different. This absurdist satire on Russian village life prompted a tight, tuneful and mischievous score from Prokofiev, with shades of Stravinsky’s *Petrushka*.



Saturday 28 January 2012
2.00–5.30pm

The Unknown Prokofiev

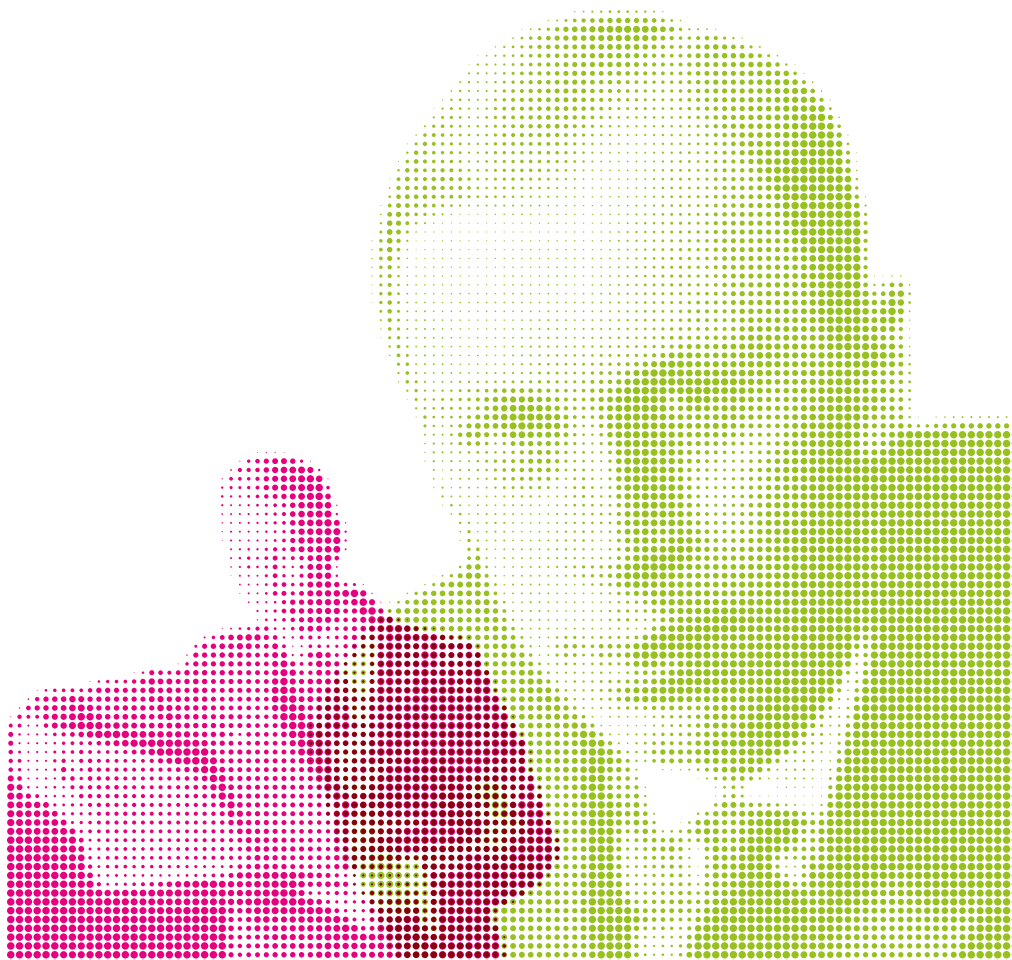
Level 5 Function Room
Royal Festival Hall

Tickets £10

Book now 020 7840 4242
lpo.org.uk

Leading Prokofiev experts Simon Morrison, David Nice and Fiona McKnight discuss Prokofiev's popular music for Soviet consumption and why these works are virtually unknown. His grandson Gabriel Prokofiev provides a personal insight into the reasons behind Prokofiev's return to Stalin's Russia only to endure censorship and difficulties as a Soviet composer.

In collaboration with The Serge Prokofiev Foundation



Saturday 28 January 2012
7.30pm

Royal Festival Hall

Tickets £9–£39
Premium seats £65

Book now 020 7840 4242
lpo.org.uk

✿ Festival multi-buy
discounts available
See page 15

Free pre-concert event
6.00–6.45pm
Royal Festival Hall

Prokofiev String Quartet No. 2
Prokofiev Humoresque
for 4 bassoons
Prokofiev Sonata for two violins
Performed by musicians from
the Royal College of Music

Prokofiev Incidental music to Egyptian Nights*
Prokofiev (arr. Atovmyan) Ivan the Terrible**
(world première of this version)

Vladimir Jurowski conductor
Ewa Podles contralto
Andrey Breus baritone
Simon Callow narrator
London Philharmonic Choir

Prokofiev's colleagues were astounded that he wrote film and stage incidental music with the same levels of passion and inspiration with which he approached his concert works. Exactitude, polish, vivid characterisation and powerful imagery abound in the music Prokofiev wrote for Eisenstein's *Ivan the Terrible* films. Tender, mystical, wild, but somehow majestic, too – the music had a complicated life, slices of it appearing in subsequent works by Prokofiev. This concert presents an arrangement that lay untouched for decades, made by Levon Atovmyan – confidant of both Shostakovich and Prokofiev, and a man who has done more than anyone else to bring the unheard work of both composers to life.

*With excerpts from texts by George Bernard Shaw, Pushkin and Shakespeare

**Generously supported by The Serge Prokofiev Foundation

Saturday 28 January 2012
c. 9.45pm

The Clore Ballroom
at Royal Festival Hall

Trapeze

A classical club night with music and dance

Free – unticketed

A late-night collaboration between the London Philharmonic Orchestra, Rambert Dance Company and Nonclassical. Prokofiev's early ballet score *Trapeze* enjoys a fresh new interpretation as part of an hour-long classical club night curated by Gabriel Prokofiev's Nonclassical. It is performed by young artists associated with the London Philharmonic Orchestra and Rambert Dance Company: Foyle Future Firsts and Quicksilver.

EDUCATION
& COMMUNITY
London Philharmonic Orchestra

 FOYLE FOUNDATION

14/15

Wednesday 1 February 2012
7.30pm

—
Royal Festival Hall

Prokofiev Symphony No. 1 (Classical)
Prokofiev Violin Concerto No. 2
Prokofiev Symphony No. 5

—
Yannick Nézet-Séguin conductor
Janine Jansen violin

Tickets £9–£39
Premium seats £65

Book now 020 7840 4242
lpo.org.uk

⊗ Festival multi-buy
discounts available
See page 15

—
Free pre-concert event
6.00–6.45pm
Royal Festival Hall

Next generation Prokofiev
Over 100 young performers
present their brand new
work inspired by the music
of Prokofiev, the culmination
of a project between the
London Philharmonic Orchestra,
Southwark schools and the
Southwark Youth Orchestra

Here we have three linchpins of Prokofiev's orchestral art: the charmingly refracted view of the music of Mozart and Haydn that formed his First Symphony; his equally neat and symmetrical Second Violin Concerto, ordered but spiked with distinctively inventive harmonies and tunes that break out on adventures; and finally his central, most astounding symphony, the Fifth. Prokofiev himself described the latter as 'a symphony of the greatness of the human spirit'. In it he explored new spiritual horizons, creating what one commentator labelled 'not so much symphony as exciting symphonic drama.' Yannick Nézet-Séguin harnesses the propulsive energy of Prokofiev in this, the last performance of our festival.



Booking information

London Philharmonic Orchestra

Ticket Office 020 7840 4242
Monday to Friday 10.00am–5.00pm
lpo.org.uk
(no transaction fee)

Southbank Centre

Ticket Office 0844 847 9920
Daily 9.00am–8.00pm
southbankcentre.co.uk
(transaction fees apply)

In person at Royal Festival Hall
Ticket Office
Daily 10.00am–8.00pm
(no transaction fee)

Royal College of Music

(21 January only)
Box Office 020 7591 4314
Monday to Friday 10.00am–4.00pm
rcm.ac.uk/boxoffice
(£1.95 booking fee)

✳ Book more, pay less: Series discounts

Book for 3–4 evening concerts at Royal Festival Hall and receive a 10% discount.

Book for all 5 evening concerts at Royal Festival Hall and receive a 15% discount.

Book for any Prokofiev festival evening concert at Royal Festival Hall and save £5 on The Prokofiev Diaries (22 January).

Access

Southbank Centre is accessible to people with disabilities. To join the Access list, telephone 0844 847 9910, email accesslist@southbankcentre.co.uk or visit southbankcentre.co.uk/access

The Amaryllis Fleming Concert Hall at the Royal College of Music has six spaces for wheelchair-users. Direct access is available from Prince Consort Road, located to the left of the main entrance. For further access information, please call 020 7591 4314.

Concessions

A limited allocation of half-price tickets is available for full-time students, benefit recipients (Jobseeker's Allowance, Income Support, and Pension Credit) and under-16s (maximum 4 per transaction. Not applicable to the concert at Royal College of Music 21 January).

📄 Prokofiev free download offer

Book any festival event and get a free download of Danjulo Ishizaka playing Prokofiev's *Symphony Concerto* with the London Philharmonic Orchestra



This download has been made available with kind support from JTI

Full details of how to download will be included with your tickets

Venue information

Royal Festival Hall at Southbank Centre

Belvedere Road, London SE1 8XX

Southbank Centre is situated on the Thames Riverside between the Golden Jubilee Bridge and Waterloo Bridge

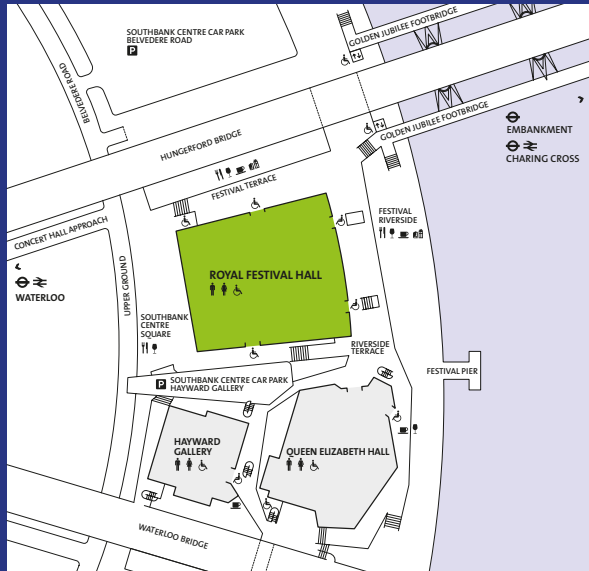
 Waterloo, Embankment or Charing Cross

 Waterloo, Waterloo East or Charing Cross

 Waterloo
For detailed bus information call 0845 300 7000 or visit tfl.org.uk/buses

 Southbank Centre Car Park
– Belvedere Road (7am–1am daily)

 Southbank Centre Car Park
– Hayward Gallery (7am–1am daily)

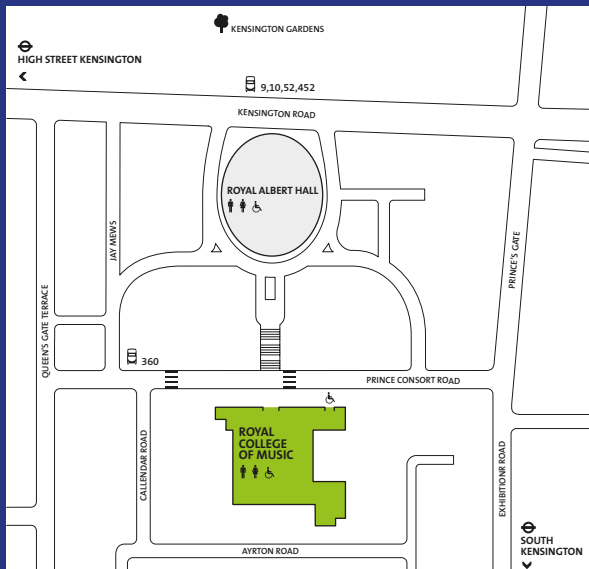


Amaryllis Fleming Concert Hall, Royal College of Music

Prince Consort Road, London SW7 2BS

 South Kensington or Gloucester Road

 Prince Consort Road,
Queen's Gate or Kensington Road
For detailed bus information call 0845 300 7000 or visit tfl.org.uk/buses



Royal Festival Hall Seating information

London Philharmonic Orchestra

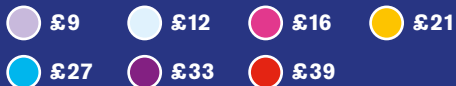
Ticket Office 020 7840 4242
Monday to Friday 10.00am–5.00pm
lpo.org.uk
(no transaction fee)

Southbank Centre

Ticket Office 0844 847 9920
Daily 9.00am–8.00pm
southbankcentre.co.uk
(transaction fees apply)

In person at Royal Festival Hall
Ticket Office
Daily 10.00am–8.00pm
(no transaction fee)

Ticket prices for Royal Festival Hall evening concerts



Premium seats £65

We have selected the very best seats in the front stalls to be sold at premium price to ensure you the finest acoustic and view.



Information in this brochure was correct at time of going to press. The right is reserved to substitute artists and to vary programmes if necessary

The London Philharmonic Orchestra gratefully acknowledges the financial support of Arts Council England and Southbank Centre



Supported by
**ARTS COUNCIL
ENGLAND**



LOTTERY FUNDED

The London Philharmonic Orchestra is a registered charity No. 238045. Southbank Centre is a registered charity No. 298909